



WALL MOUNTING

FLOOR MOUNTING

BATH SURROUND

WALL-MOUNTED  
TOILET

SHOWER WALL

# LITEX WET ROOM SYSTEMS



# WHAT IS LITEX?

## - A UNIQUE WET ROOM SYSTEM

Litex are membrane panels that can be used in wet rooms. These Litex boards act as both construction panels and membranes, and are a superb product if you want to build a bathroom that's watertight and free of harmful fungus and rot. Litex boards can be laid directly with tiles and also have insulating properties. Litex boards can be used on walls, floors and for enclosures. Actually fitting Litex is very simple.



2

### LITEX BOARD STRUCTURE

Litex boards have a core of extruded polystyrene, and both sides of the board are covered with a glass fibre-reinforced cloth attached using a specially developed water-based epoxy. Together, these components form a watertight board. The core material shows no signs of breaking down even under extreme conditions.

### THE INCREDIBLE CORE MATERIAL

Litex boards have a core made of STYROFOAM XPS. STYROFOAM is the real flagship of XPS products and has been used to insulate roads and railways in Norway for 30 years now. Extensive surveys and field measurements have been carried out. The material shows no signs of breakdown and only insignificant amounts of moisture have been absorbed.

There are two different foam plastic products on the market which are used for membrane panels in wet rooms. We would like to show you the difference between these two products.

The pictures of the materials above are lifesize (1:1). Take a look at the difference in the structure of the materials. This will show you that membrane panels using EPS as their core material will be a lot more susceptible to moisture absorption and subsequent damage from damp than boards made using an XPS core.

### ENVIRONMENTALLY FRIENDLY

We're fascinated by the indoor climate and environment here at Litex, and this is why our Litex boards contain no brominated flame retardants or other environmental toxins which might harm you and your family. Build a healthy, safe bathroom that'll last for decades.

©TM Trademark of the Dow Chemical Company



### CUT XPS

Extruded polystyrene, or XPS for short, is a homogeneous material with a closed cell structure which means that only minimal amounts of moisture are able to penetrate the product.



### CUT EPS

Expanded polystyrene, or EPS for short, has a looser, more open structure than XPS and so moisture is more readily able to penetrate the material. (EPS is best known as Isopor.)



## CONTENTS

2	What is Litex?
3	Contents
4	Approval and recommendations
5	Litex Wet Room Systems
7	Walls - Fitting
10	Shower walls - Fitting
12	Wall mounting toilets and pipe ducts
13	Floors - Fitting
16	Creating bathroom floors
17	Exciting fittings
20	Bathtub surround
22	Accessories
24	Contact information



## SINTEF BYGGFORSK (NORWAY)

SINTEF Byggforsk is an approval body and a technical control body for product certification. This institute issues product documentation in the form of NBI Technical Approvals. An NBI Technical Approval confirms that a product is appropriate for a given application, and provides you with documentation which guarantees quality, meets the requirements for documentation as laid down in the regulations, and provides guidelines for use. NBI Technical Approval no. 2296 for Litex Wet Room Systems can be downloaded from [www.litex.no](http://www.litex.no)

## WET ROOM STANDARD (NORWAY)

Byggebransjens våtromsnorm (BVN, the Wet Room Standard of the Construction Industry) is a tool for planning and executing work in wet rooms. This is a voluntary arrangement, and parties have to agree between themselves whether the standard is to be applied. Therefore, BVN has to be regarded as a recommendation, not as a legal requirement. If the parties agree that the BVN is to apply, the people working in the wet room also have to have a wet room certificate.

## BY OG BYG (DENMARK)

SBi creates research-based knowledge to improve construction and the constructed environment. This is achieved by researching topics of significance to the practitioners and decision makers working with construction and the constructed environment and by passing on the knowledge of the institute to these groups. Statens Byggeforsknings Institut (the Danish Building Research Institute) in Hørsholm has carried out all the required tests using Litex for both floor and wall installations.

ETA-Danmark has been appointed issuer of European Technical Approvals and designated to participate in the compilation of Guidelines for European Technical Approvals in accordance with the Building Commodities Directive. As far as materials and structures in this group are concerned, the approvals serve to document the fact that approved products meet the functional requirements laid down in the building regulations and associated standards. In some cases, the regulations prescribe that approved materials or structures must be used. Litex on floors holds MK approval MK 7.22/1557, while Litex on walls holds MK approval MK 7.32/1558.

## VTT (FINLAND)

VTT Technical Research Centre of Finland is the biggest contract research organisation in Northern Europe. VTT provides high-end technology solutions and innovation services. From its wide knowledge base, VTT can combine different technologies, create new innovations and a substantial range of world class technologies and applied research services thus improving its clients' competitiveness and competence. Through its international scientific and technology network, VTT can produce information, upgrade technology knowledge, create business intelligence and value added to its stakeholders. VTT is a non-profit-making research organisation. Litex holds VTT Product Certificate no. C-1542-07.





## LITEX – A NORWEGIAN SENSATION!

Litex is a product owned by Norwegians and produced by Norwegians. Litex first saw the light of day in 2000 following a long period of product development, and since it came into being it's helped to make thousands of bathrooms and wet rooms more secure against damage from fungus and rot. The feedback we've received from our customers has been overwhelmingly positive, and we're pleased and proud to be able to offer something which we feel is a unique quality product ideal for use in today's wet rooms - and the wet rooms of tomorrow. Litex is produced in Sandefjord in Norway.

## A WET ROOM SYSTEM

Here at Litex, we set great store by ensuring that Litex and all Litex accessories are of top quality. We're very particular about what raw materials and suppliers we select so that you get the best possible results. Litex board elements are well known and tried and tested. The core material (STYROFOAM™) in Litex boards has been in use since 1942. Litex rubberised sleeves are made of extremely durable NBR rubber, tested for ageing to 26 years. And all to make sure that your bathroom will be safe from damp and rot for many years to come.

## FOR SIMPLICITY'S SAKE

There are lots of advantages to using Litex in bathrooms and wet rooms. Litex boards are really easy to fit and adjust to suit your bathroom. As well as acting as a membrane on walls and floors, Litex can be used to create storage space in the form of shelves, cabinets and whatever else you might require. Creating integral bath surrounds, or integrating your washing machine and tumble drier are child's play with Litex! The only limit is your imagination.

Litex is made of a lightweight but robust material. A small hand saw or wallpaper knife is all you need to fit your boards to whatever application you like.



## BUY THE MOST IMPORTANT THINGS FIRST

It costs a lot of time and money to do up a bathroom. For most of us, this is something that only gets done once a decade or so. Expensive bathroom fittings and nice tiles are often priority items when it comes to doing up a bathroom. But not many people realise that having to replace the underlying structure of the walls and floor can be extremely expensive, compared to replacing the bathroom fittings. To make sure your bathroom will maintain high levels of quality and provide you with years of service, it's also important to focus on what you'll find behind the tiles.

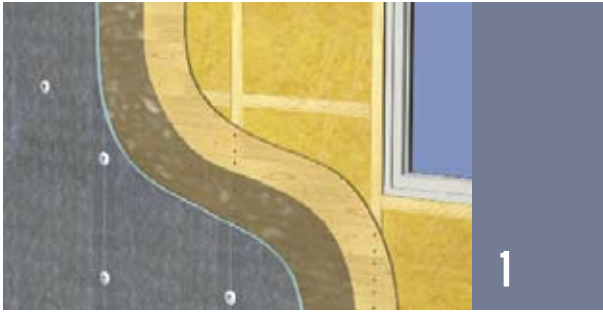
The membrane in the bathroom has to stop moisture penetrating the underlying structure and causing expensive damage resulting in fungus and rot. The proliferation of microorganisms as a result of damp in bathrooms has proven to cause more damage to health than smoking and can cause respiratory infections and asthma.

Litex boards help to make sure that your bathroom is able to withstand damp and damage from rot. Damage from fungus and damp won't just wreck the room itself; they'll also impair the indoor climate in the building and cause health problems for the people living there.



# FITTING LITEX TO WALLS SIMPLIFIES THE JOB

Litex Wet Room Boards can be fixed to most bases. These boards can be fitted directly to stud partitions or attached to existing walls made of rough panels, brick, plaster, OSB and similar materials.



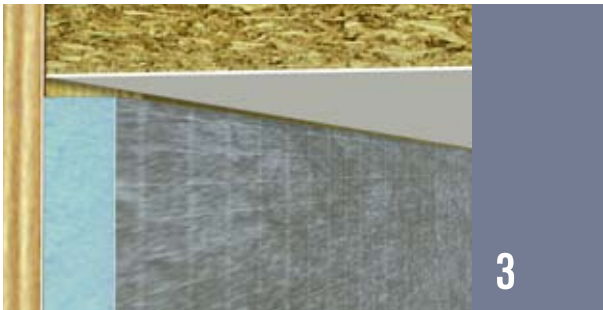
## LITEX ON ROUGH PANELS OR SIMILAR

Litex Wet Room Boards can be fixed to most bases. They can be fitted directly to stud partitions or attached to existing walls made of rough panels, brick, plaster, OSB and similar materials. Litex boards of all thicknesses can be used on fixed bases.



## LITEX ON STUD PARTITIONS

Litex 13 mm or thicker can be used on vertical stud partitions with a centre distance of 30 cm. Litex 20 mm or thicker can be used on vertical stud partitions with a centre distance of 60 cm. If 20 mm boards are used, we recommend that you fit transverse studding at a height of 120 cm. Boards fitted to stud partitions may be found to be flexible, but they attain a more than satisfactory rigidity when included in a finished structure with tile adhesive, tiles and grout. When fitted directly to stud partitions, studding has to be added in order to mount fittings and bathroom equipment.



## ATTACHING LITEX BOARDS

The boards are fixed to the wall either using Litex Mounting Adhesive or by screwing them into place on the existing base using Litex Mounting Discs and screws. Make sure that your Litex boards are fitted with a minimum of 5 mm clearance to the ceiling. Assume about 10 screws per square metre.

To rough panels or similar: screw length = Litex thickness + rough panels + approx. 5 mm.

To stud partitions: screw length = Litex thickness + approx. 25 mm.

The distance between screws on Litex 13, 20 and 30 mm is 25, 30 and 40 cm respectively.



## LITEX ON STEEL SUPPORTS

Needle point screws which are 5-10 mm longer than the board thickness are used on steel supports. Insert the screws 25-30 cm apart, as well as in the centre of the board and at the top and ground beam. Gradually screw up from the bottom to the top, or vice versa. This prevents the steel support from twisting. When fitting to steel supports with no underlying board layer (e.g. displaced or double stud partition), the rigidity has to be assessed in each individual case. The rigidity of the wall can be increased by reducing the c-c distances, using extra studding or increasing the thickness of the Litex boards used.



## LITEX ON BRICK AND CONCRETE

All Litex board thicknesses can be used for fitting to dressed and undressed brick or concrete. Litex 13 mm is fully glued using tile adhesive which is applied using a toothed putty knife. Thicker Litex boards can be spot-glued, which is something of an advantage on uneven surfaces for setting up walls. Place at least 15 - 20 spots of tile adhesive on the Litex board in a "dice 5" pattern. Press the board against the wall so that the tile adhesive sticks to the base. We recommend securing it with 3-4 pins diam. 6 mm and a Litex Mounting Disc (next day). The tile adhesive should be mixed thoroughly according to the instructions of the manufacturer. Too dry a mixture can result in reduced adhesion. Solvent-based adhesive types must not be used.



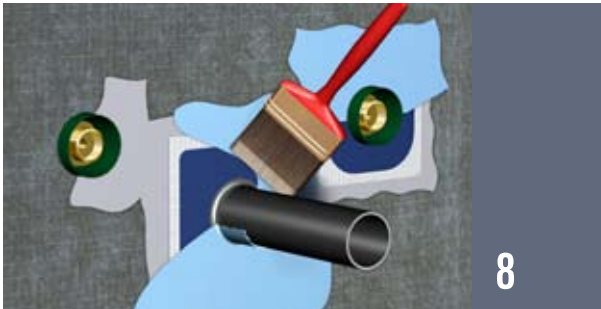
## LITEX ON TILED WALLS

Litex 13 mm/Litex 20 mm is affixed to old tiled walls using tile adhesive. For good results, clean the old tiles with methylated spirit, then coat the surface with primer mixed with a little tile adhesive. The tile adhesive is applied to the Litex board using a toothed putty knife. We recommend securing it with 3-4 brick pins diam. 6 mm and a Litex Mounting Disc. Make sure that the existing wall structure is dry and well suited to further extension work.



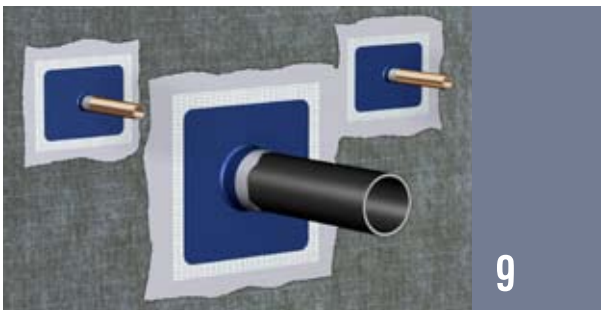
## MAKING HOLES

Check carefully where pipes and drains are to go. Hold the Litex board against the pipe socket and knock on the board. Cut out a hole according to the impression in the Litex board. A fixed hole-making tool for a drill is recommended. A wallpaper knife or similar can also be used.



## PIPE SLEEVES FOR PIPE-TO-PIPE

Pipe inlets with pipe-to-pipe systems are fitted such that the sleeve is positioned 1-2 mm outside the fitted tile. This is necessary to ensure that the pipe sleeve is fitted correctly. It is recommended that the Litex pipe sleeve be glued to the Litex board using Litex Mounting Adhesive. Pull on the sleeve and pat or roll the surface to make sure that the sleeve makes good contact with the mounting adhesive. When the adhesive is dry, cover the sleeve with a lubricating membrane. Alternatively, the sleeve can be fitted wet on wet with a lubricating membrane. All approved lubricating membranes can be used.



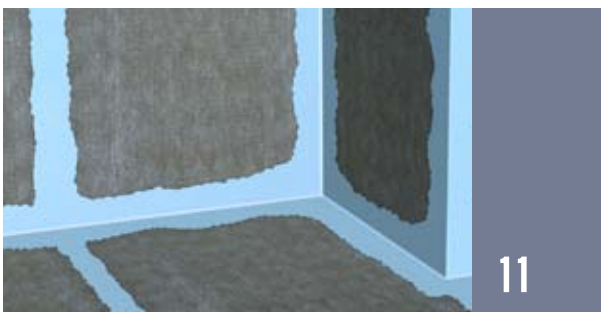
## PIPE SLEEVES FOR COPPER PIPING

Seal the pipe inlet using Litex rubberised sleeves for copper piping. The sleeve is fitted as described in point 8.



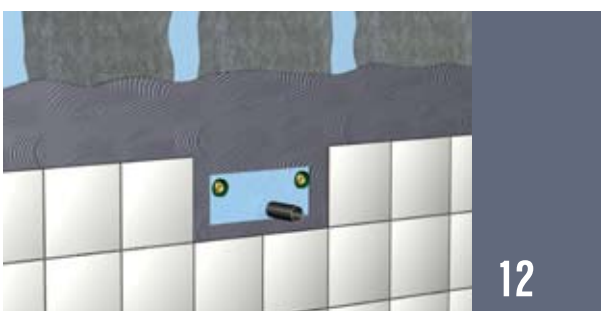
## SEALING OF JOINTS

Litex rubberised corner sleeves can either be glued to the Litex board using Litex Mounting Adhesive and coated with a lubricating membrane (recommended solution), or fitted wet on wet with a lubricating membrane. Litex Jointing Strip, Fibre or Litex Jointing Strip, Rubberised is used to seal board joints and screw holes and fitted wet on wet with a lubricating membrane. The lubricating membrane is applied over the joint or hole, then press down the strip so that it is moistened thoroughly and then coat with a lubricating membrane. Remember to overlap the joint seals. All approved lubricating membranes can be used.



## TRANSITION POINTS, FLOOR/WALL

Remember to allow vertical jointing strips to overlap by 20 mm over any horizontal transition point. Seal all points where the floor meets the wall, joints, screwed joints and transition points between different materials with Litex Jointing Strip, Fibre/Litex Jointing Strip, Rubberised with a lubricating membrane. Litex Jointing Strip, Rubberised is recommended at the transition point between the floor and wall and in the shower stall as this provides considerably better resistance to chemicals and detergents (soap) and better resistance to ageing. Calculate approx. 1 kg of lubricating membrane to every 10 m of joint.



## TILED LITEX WALL

Tile adhesive and tiles are applied to the fully fitted Litex boards. Litex Mounting Adhesive (among other things) can be used so that you don't have to use screws in tiles when fitting towel rails and other light objects.



# FITTING A SHOWER STALL WITH LITEX

## DECORATIVE AND GREAT TO LOOK AT

You can easily fit a practical shower stall in your bathroom using Litex 75 mm.



1

## LITEX FOR A SHOWER STALL

A fully tiled bathroom with everything ready to fit the wall. The shower wall can be fitted in the bathroom before or after tiling.



2

## SIMPLE FIT

Adjust the size of the board as required. We're using Litex 75 mm here.



3

## AFFIX USING BRACKETS

Screw or glue in place a U-Mount of the same thickness as the board. Where possible, avoid drilling through tiles.



4

## LITEX MOUNTING ADHESIVE

Apply Litex Mounting Adhesive to the area where the board is to be positioned.



5

## POSITION THE BOARD

Place the board in the profiles and allow the adhesive to dry before tiling. The shower door should be attached to a fixed wall, but as an alternative it can be fixed to the shower wall by inlaying wood which is glued in place using Litex Mounting Adhesive.



6

## FULLY TILED

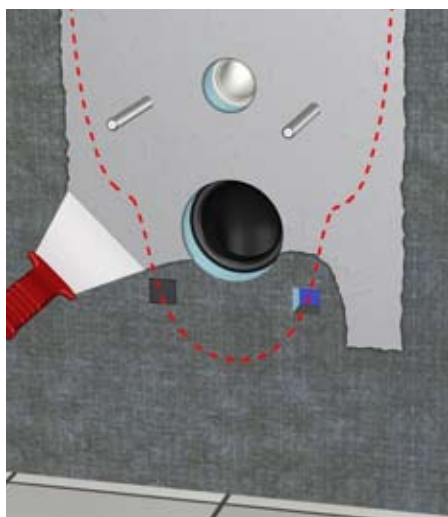
The board is fully tiled and the bathroom has a new shower wall that was easy to create.

# ELEGANT SOLUTIONS

## WALL MOUNTED TOILETS AND PIPE DUCTS



1



2



3

12

### WALL-MOUNTED TOILET

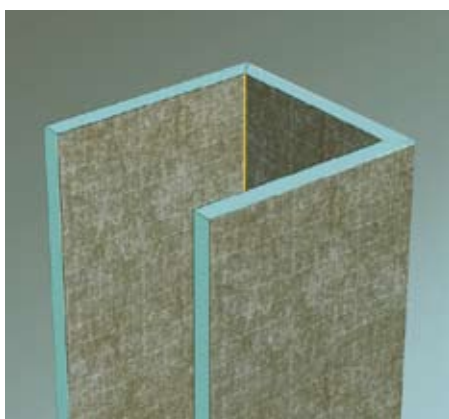
A Mounting Frame for a wall-mounted toilet can be fitted outside a finished Litex wall, or concealed in the building framework and covered with Litex Wet Room Boards. The Litex boards can be glued directly to the wall frame using Litex Mounting Adhesive. Litex 20 mm can be used on a Mounting Frame, c-c 60 cm.

### REINFORCEMENT

The reinforcement has to be created by cutting out the point of contact between the tie bar and the porcelain and reinforcing with tile adhesive or cement. The illustration shows two reinforcement points, one of which is filled with tile adhesive. The dotted line in the illustration shows an outline of the toilet. The point of contact will vary, depending on the toilet type and frame.

### FINISHED TOILET

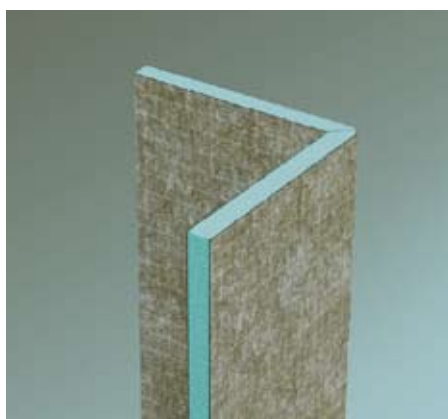
Fit the toilet according to the manufacturer's instructions. A wall mounted toilet makes better use of the space available and makes the toilet easy to clean.



4

### U-SHAPED PIPE DUCT

Litex U-shaped pipe ducts to conceal drain pipes. These are ready to be tiled. The ducts are supplied flat-packed (20 x 20 x 20 cm) with double-sided tape in cut grooves for 90 degree adaptation/fitting. Length 244 cm.



5

### L-SHAPED PIPE DUCT

Litex supplies angle ducts to conceal drain pipes. These are ready to be tiled. These angle ducts are supplied flat-packed with double-sided tape in the standard formats 15 x 15 cm, 30 x 30 cm and 20 x 40 cm. Length 244 cm.



6

### FITTED PIPE DUCT

The pipe duct can easily be adapted and fitted to brick, tiled walls or Litex boards. Pipe ducts can be glued to walls using mounting adhesive or attached using Litex mounts (see p. 23).



# FITTING LITEX TO FLOORS

**THIS IS HOW EASY IT IS!**

Litex boards can be fitted to most types of base, such as wooden flooring, concrete and similar. The underfloor must be stable and checked for any failure. Litex boards require full support and cannot be fitted directly on joists.



1

## LITEX ON FLOORS

The boards are screwed onto the underfloor. Screws in the joints plus 4-5 screws in the middle of the board.

Screw length = Litex thickness + approx. 25 mm. Litex boards are glued to concrete floors using a suitable tile adhesive and secured using 4-5 pins in the middle of the board. It's recommended that slopes are provided in underfloors or, possibly, in integral casts over the Litex boards.



2

## ATTACHING LITEX TO WOODEN FLOORING

Place the boards on the floor, but make sure they're at least 5 mm from the wall. Screw the boards to the floor using Litex Mounting Discs and screws. The boards are fitted in courses with 600 mm displacement in large areas. In rooms with floorboards, the boards should be fitted across the floorboards and in courses with 600 mm displacement.



3

## LITEX ON FLOOR COVERINGS

Litex boards can be glued to floor coverings using Litex Mounting Adhesive, a water-based contact adhesive, cement, tile adhesive or cement-based grout. Ideally, use a toothed putty knife to distribute the adhesive. Make sure that the base is firmly positioned. Make sure that the existing floor structure is dry and well suited to further extension work.

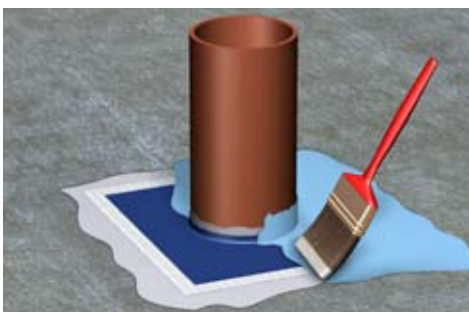
14



4

## MAKING HOLES FOR DRAINS

Check carefully where holes for drains are to go. Press the Litex board against the pipe socket. Cut out holes in the Litex board using a fixed hole-making tool, reciprocating saw or wallpaper knife.



5

## FITTING A DRAIN SLEEVE

Apply Litex Mounting Adhesive around the drain using a putty knife. Pull on the Litex pipe sleeve and pat or roll the surface to make sure that the sleeve makes good contact with the adhesive. When the adhesive is dry, cover the sleeve with a lubricating membrane. Alternatively, the pipe sleeve can be fitted wet on wet with a lubricating membrane.



6

## FITTING A DRAIN

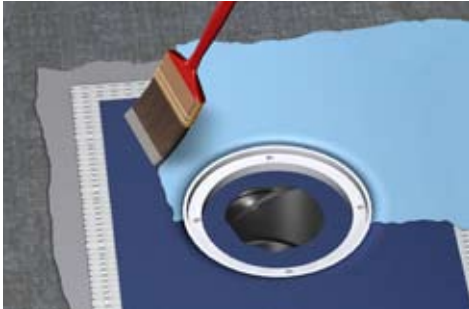
The drain can be fitted on a level with an underfloor or evenly with a Litex board on top. The board may be complete or divided around the drain. Most known drains can safely be fitted together with Litex. Follow the manufacturer's instructions for fitting drains.



7

## GLUING DRAIN SLEEVES

Position four screws with discs within the area covered by the drain sleeve. Remove the clamping ring and apply Litex Mounting Adhesive around the drain over an area about 2 cm larger than the drain sleeve. Apply an even layer using a putty knife. Place the drain sleeve in the wet adhesive and spread the adhesive evenly over the sleeve reinforcement. Make sure that the sleeve is seated firmly in the adhesive.



8

## SEALING A DRAIN SLEEVE

Leave the adhesive to dry while you fit the rest of the floor. When the adhesive is dry, cut a hole (diameter 5 cm) in the middle of the sleeve. Apply adhesive beneath the sleeve, down towards the O-ring and along the top of the drain. Press down the clamping ring and screw it in position. Then clean using a sharp knife. Lubricate a membrane on the upper side of the drain sleeve and over an area of about 2 cm outside the sleeve. All approved lubricating membranes can be used.

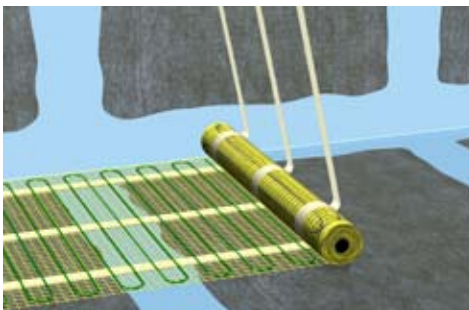
Follow the manufacturer's instructions for fitting drains.



9

## SEALING CORNERS AND TRANSITION POINTS

It's recommended that prefabricated internal and external corner sleeves be glued using Litex Mounting Adhesive and coated with a lubricating membrane. May be fitted wet on wet with a lubricating membrane where necessary. Joints and screw holes are lubricated with a membrane. Here, place the Litex Jointing Strip, Fibre or Litex Jointing Strip, Rubberised in the wet membrane and lubricate well with a membrane wet on wet. Litex Jointing Strip, Rubberised is recommended at the transition point between the floor and wall and in the shower recess as this provides considerably better resistance to chemicals and detergents (soap) and better resistance to ageing. Calculate approx. 1 kg of membrane to every 10 m of joint. All approved lubricating membranes can be used.

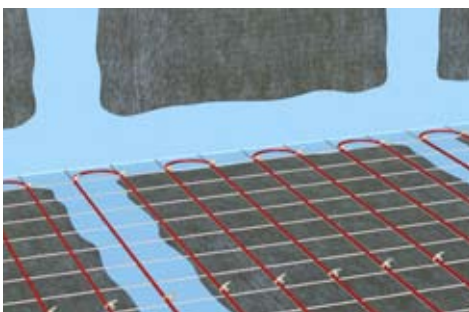


10

## HEATING ELEMENTS DIRECTLY ON THE LITEX BOARD

Heating elements of up to 10 W per metre (up to 150 W per sq m) can be laid directly on Litex boards. Heating elements laid may be mat-based or in loops which are taped or glued to the Litex boards. Heating elements are fitted according to the manufacturer's instructions.

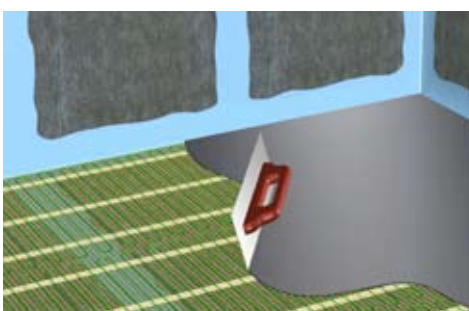
15



11

## HEATING ELEMENTS ON REINFORCING MESH

Heating elements of 10 -17 W per metre must be fitted on a reinforcing mesh which will not corrode and which will raise the element from the Litex board by a minimum of 5 mm. Steel mesh of a gauge of approx. 8 cm x 8 cm may be used. Heating elements are fitted according to the manufacturer's instructions.



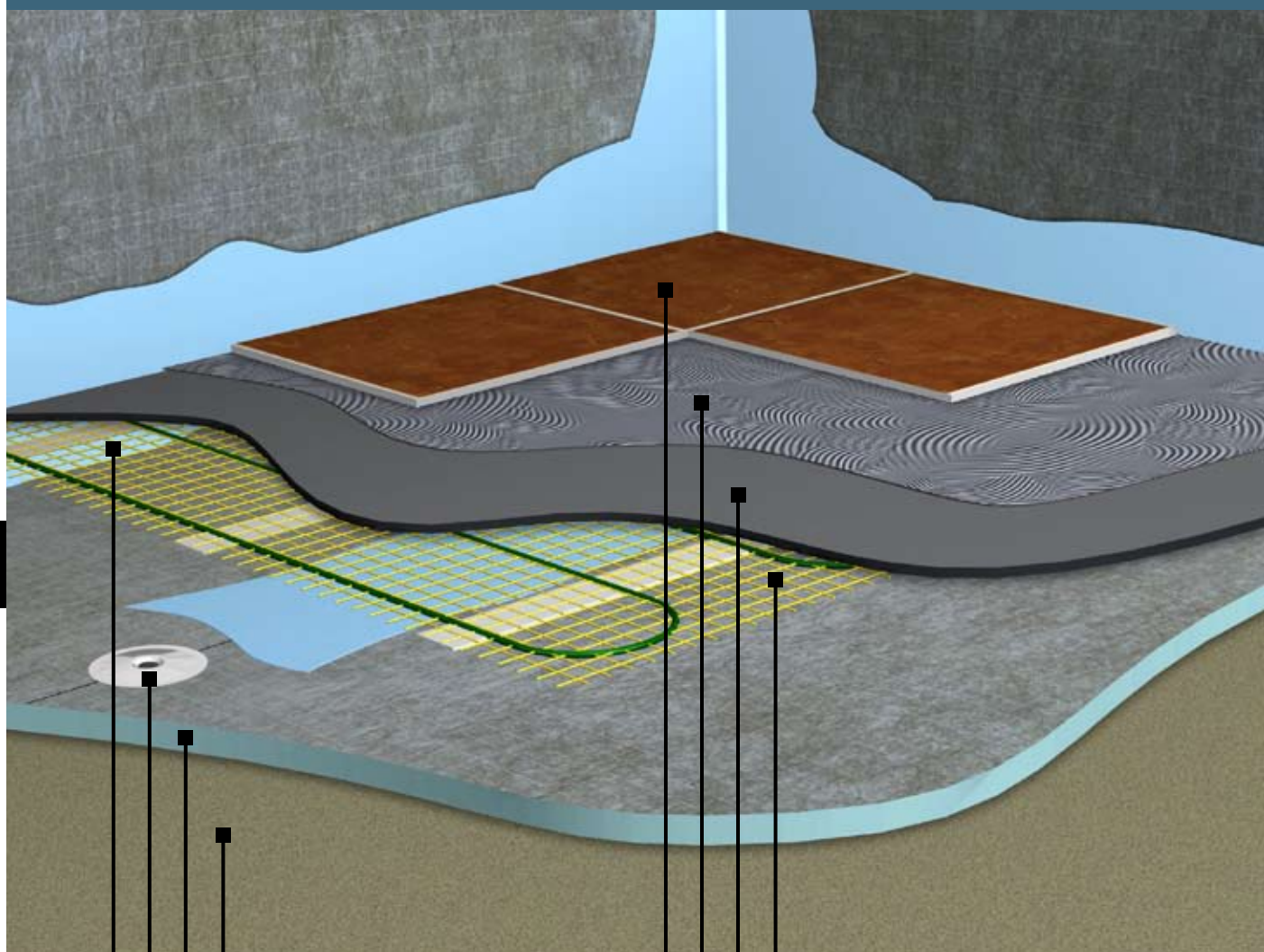
12

## GROUTS

Remember to clean the base to ensure good adhesion. Low-profiled, cement-based grout which are able to withstand water are suitable grouts for covering heating elements. Grout is used according to the manufacturer's instructions. It's always recommended that a lubricating membrane be fitted over the bathroom casting in the area where the water from the shower will fall. If you go for traditional grouts and renders which can't withstand water, these must be covered completely with a lubricating membrane. The Litex boards mustn't be sealed in these cases. It's recommended that slopes to drains are laid in the underfloor or, possibly, in integral casts over the Litex boards.

# LAYER BY LAYER

## LOW-PROFILED, LIGHTWEIGHT STRUCTURE



- Stable underfloor
- Litex can be used in most thicknesses
- Litex Mounting Disc
- Sealing joints and screw holes

- Heating element of up to 10 W per m directly on the Litex board
- Water-resistant grout
- Tile adhesive
- Tiles



# MODERN AND EXCITING FITTINGS

## DESIGN YOUR OWN FITTINGS

Litex boards are strong and flexible and so are ideal for creating an exciting, original environment in your bathroom. Litex 50 mm is particularly well suited to the design of fittings, both alone and in combination with other materials. Litex boards can also be split to make them flexible and allow them to be used for round shower solutions, conical washbasin surrounds and similar. Litex Mounting Adhesive and Litex fittings are very useful when it comes to designing fittings.



18







# SIMPLE ENCLOSURE OF A BATH

## EXACTLY THE WAY YOU WANT IT WITH LITEX

Before starting on your bath surround, you have to work out how large the tiles and join widths are to be. Minor adaptations to length and width are recommended so that you do not have to cut the tiles. The bath is placed in the corner, and a surround is created across the front of the bath. In this example, we've used Litex Wet Room Board 50 mm, Litex Mounts, wood screws and Litex Mounting Adhesive.



1

## START OFF WITH A FLOOR FLANGE

The bath must always stand on its own feet. The front of this bath is divided into three. We also want to build a step. This illustration shows a floor flange and the midsection of the front of the bath fitted together.



2

## RECESS FOR PIPE

Vertical supports are fitted for the top plate, with a recess for pipes as shown in the illustration.



3

## LAY AUXILIARY BLOCKS

The front is divided into three in this example. Lay auxiliary blocks so that the angles at the front of the bath are correct.



4

## FULLY GLUED FRONT

The front is divided into three and glued together using Litex Mounting Adhesive and screws. The front is not attached to the wall yet.

21



5

## STEP

A step in front of a bath. The step here is made of one internal and one external vertical support, with Litex Wet Room Board 50 mm on the top. Four spacing blocks are attached to the inner wall of the step before being attached to the front. Once the parts are ready and have been checked in situ, they're fitted together using Litex Mounting Adhesive and screws. The front and step are now in one piece.



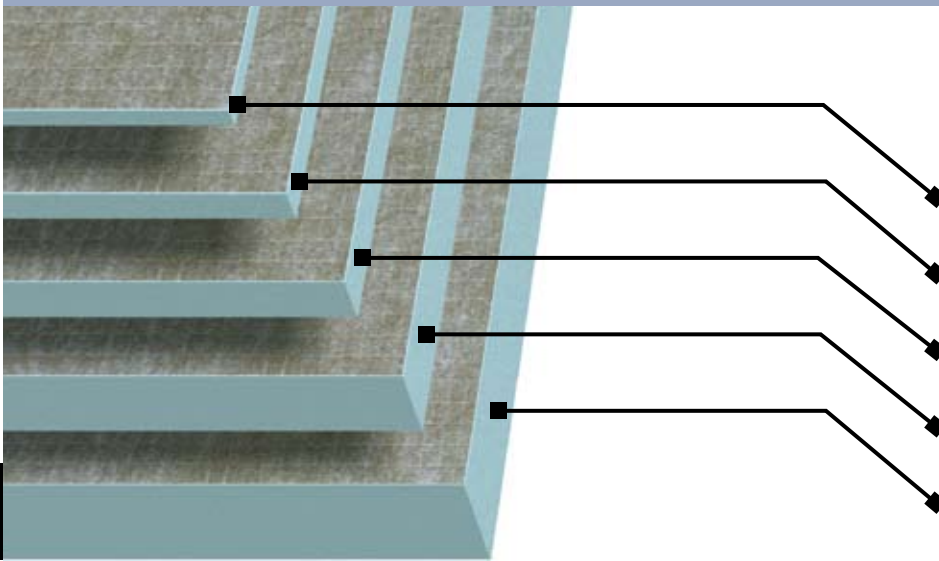
6

## READY FOR TILING

The step is attached using a Litex Mount. The entire surround is now in one piece and can be lifted away. The surround is attached to the wall, floor and bath using silicone. If you need to have the bath serviced, the silicone joint can be customer with a knife and the entire front pulled off in a single piece. An inspection hatch should be fitted during tiling so that it can be adapted to suit the size of the tiles. The inspection hatch/vent hatch must be positioned such that you can get at the drain beneath the bath and so that it permits access for servicing.

# LITEX PRODUCT OVERVIEW

## LOTS OF OPTIONS

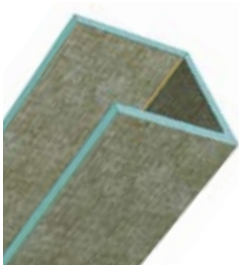


### LITEX BOARDS AND DIMENSIONS

Boards are supplied in 60 x 244 cm size, with varying thicknesses: 13 mm, 20 mm, 30 mm, 50 mm and 75 mm.

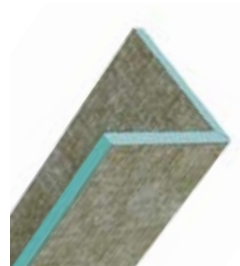
- 13 mm
- 20 mm
- 30 mm
- 50 mm
- 75 mm

22



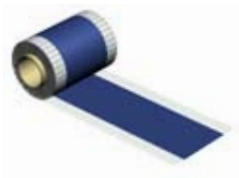
### U-SHAPED PIPE DUCT

For 90 degree adaptation/fitting.  
Length 244 cm  
20 x 20 x 20 cm



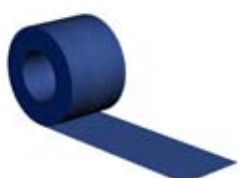
### L-SHAPED PIPE DUCT

Length 244 cm  
15 x 15 cm  
30 x 30 cm  
20 x 40 cm



### LITEX JOINTING STRIP, RUBBERISED

NBR rubber strip is used together with approved membrane. Recommended for use on flooring, at the point where the floor meets the wall and in wet zones.  
Length on roll: 25/50 m



### LITEX JOINTING STRIP, FIBRE

Used together with approved membrane for sealing joints and the point where the floor meets the wall.  
Length on roll: 25 m



### LITEX DRAIN SLEEVE UNIVERSAL

Fibre-reinforced rubber.  
External dimensions:  
300 x 300 mm for  
gutters and drains.  
Floor/drain sleeve  
universal without holes.



### LITEX PIPE SLEEVE:

Fibre-reinforced NBR rubber.  
External dimensions 110 x 110 mm.  
Litex sleeve, 8 mm hole for copper piping  
Litex sleeve, 28 mm hole for drain pipes  
Litex sleeve, 40 mm hole for pipe-to-pipe  
systems



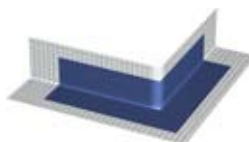
### LITEX SLEEVE INTERNAL CORNER

Prefabricated internal corner. Fibre-reinforced NBR rubber shaped as an internal corner and used together with the Litex rubber-coated jointing strip and an approved membrane.



### LITEX SLEEVE EXTERNAL CORNER

Prefabricated external corner. Fibre-reinforced NBR rubber shaped as an external corner and used together with the Litex rubber-coated jointing strip and an approved membrane.



### LITEX U-MOUNT

For attaching joints and boards to walls and floors.

- U-mount for 20 mm boards
- U-mount for 30 mm boards
- U-mount for 50 mm boards
- U-mount for 75 mm boards



### LITEX MOUNT, 90 DEGREES

- Corner bracket
- Mount, 90 degrees for 20 mm boards
- Mount, 90 degrees for 30 mm boards
- Mount, 90 degrees for 50 mm boards



### LITEX U-MOUNT WITH SIDE BRACKET

For attaching joints and boards to walls and floors where space is at a premium. This U-mount has to be fitted to boards before attaching them to walls/floors.

- U-mount with side bracket for 20 mm boards
- U-mount with side bracket for 30 mm boards
- U-mount with side bracket for 50 mm boards



### LITEX T-MOUNT FOR 50 MM BOARDS

- Combines H + 90 degrees.
- T-mount for 50 mm boards



### LITEX H-MOUNT

- For joining boards.
- H-mount for 20 mm boards
- H-mount for 30 mm boards
- H-mount for 50 mm boards



### LITEX MOUNTING ADHESIVE

Design adhesive. Recommended for gluing Litex rubberised sleeves and gluing Litex boards.



### LITEX MOUNTING DISC

- S 32 for fitting
- Litex boards on floors and walls.
- 100x per pack.



### LITEX MOUNTING SCREW

- for fitting Litex boards on floors and walls.
- 100x per pack.
- Litex mounting screws 32 mm
- Litex mounting screws 42 mm
- Litex mounting screws 57 mm





# LITEX - THE ONLY LIMIT IS YOUR IMAGINATION

## DEALERS

### LITEX AS

Pindsleveien 4, 3221 Sandefjord,  
Pb 1073, NO-3204 Sandefjord, Norway  
Telephone +47 33 48 99 70  
Fax +47 33 48 11 30  
e-mail: [post@litex.no](mailto:post@litex.no) · [www.litex.no](http://www.litex.no)

